



Webbs  
Helping people move since 1994

**Charlesdale Drive | Walsall | WS9 0HN**  
**Offers In The Region Of £375,000**

 **Webbs**  
estate agents

## Summary

**\*\* EXTENDED DETACHED BUNGALOW \*\* DESIRABLE QUIET LOCATION IN ALDRIDGE \*\* CLOSE TO AMENITIES AND SHOPS \*\* DECEPTIVELY SPACIOUS \*\* IDEAL UPGRADE PROJECT \*\* SOLAR PANELS FITTED \*\* THREE BEDROOMS \*\* LIVING ROOM & DINING AREA \*\* BATHROOM \*\* KITCHEN \*\* UTILITY ROOM \*\* SHOWER ROOM \*\* DRIVEWAY \*\* GARAGE \*\* LOW MAINTENANCE GARDENS \*\* DOUBLE GLAZING \*\***

Webbs Estate Agents have pleasure in offering this extended detached bungalow nestled in a quiet desirable and convenient location, being close to Aldridge centre amenities and shops. Briefly comprising : Large open hallway , living room, dining area, utility room, shower room, bathroom and three bedrooms. Externally there is a driveway, garage, private low maintenance gardens and solar panels. For a viewing please call our Aldridge branch on 01922 288800.

## Key Features

- NO UPWARD CHAIN
- SOUGHT AFTER LOCATION
- LIVING ROOM, DINING AREA
- UTILITY & SHOWER ROOM
- LOW MAINTENANCE GARDENS, SOLAR PANELS
- DETACHED BUNGALOW
- 3 BEDROOMS
- KITCHEN
- BATHROOM
- EARLY VIEWING ESSENTIAL

## Rooms and Dimensions

### LARGE ENTRANCE HALLWAY

### LIVING ROOM

16'8" x 10'9" (5.10 x 3.29)

### DINING AREA

8'8" x 8'9" (2.66 x 2.69)

### UTILITY & SHOWER ROOM

10'9" x 8'9" (3.29 x 2.69)

### KITCHEN

8'11" x 10'8" (2.72 x 3.27)

### BEDROOM ONE

12'6" x 10'3" (3.82 x 3.14)

### BEDROOM TWO

11'3" x 9'0" (3.44 x 2.75)

### BEDROOM THREE

7'11" x 7'10" (2.42 x 2.41)

### BATHROOM

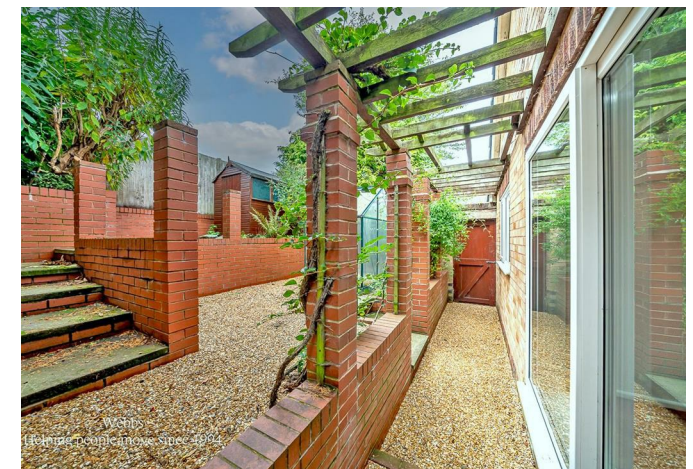
9'2" x 5'3" (2.8 x 1.62)

### GARAGE & SOLAR PANELS

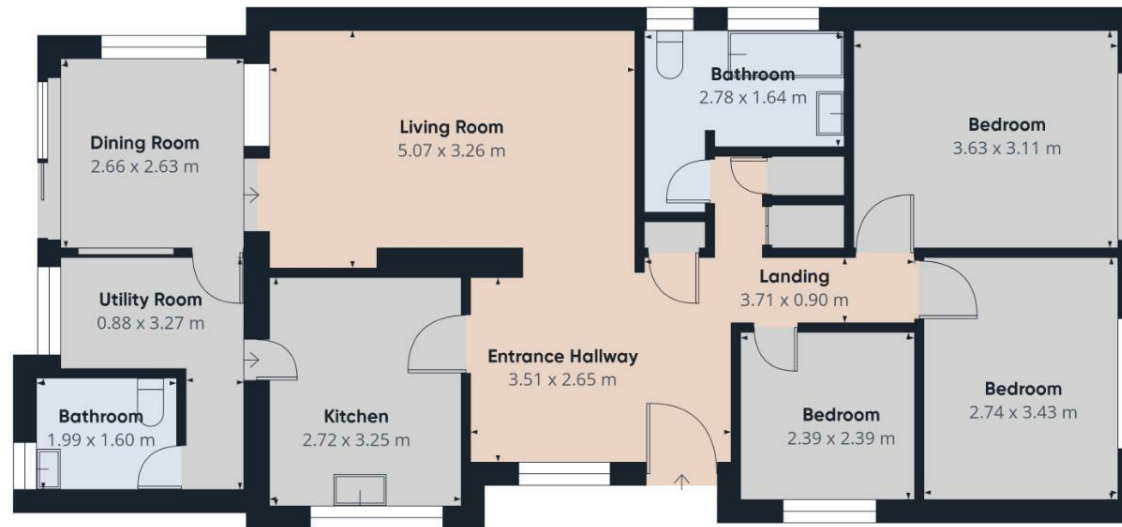
### DRIVEWAY & GARDENS

### Identification Checks

### AGENTS NOTE







Approximate total area<sup>(1)</sup>  
88.4 m<sup>2</sup>

(1) Excluding balconies and terraces

Calculations reference the RICS IPMS  
3C standard. Measurements are  
approximate and not to scale. This  
floor plan is intended for illustration  
only.

GIRAFFE360

Webbs Estate Agents - endeavour to maintain accurate depictions of properties in Virtual Tours, Floor Plans and descriptions, however, these are intended only as a guide and purchasers must satisfy themselves by personal inspection.

